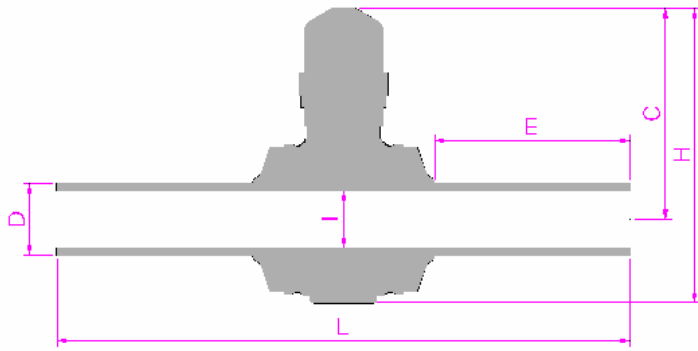


SMALL CTS SIZE PE VALVES (Standard Full Port)

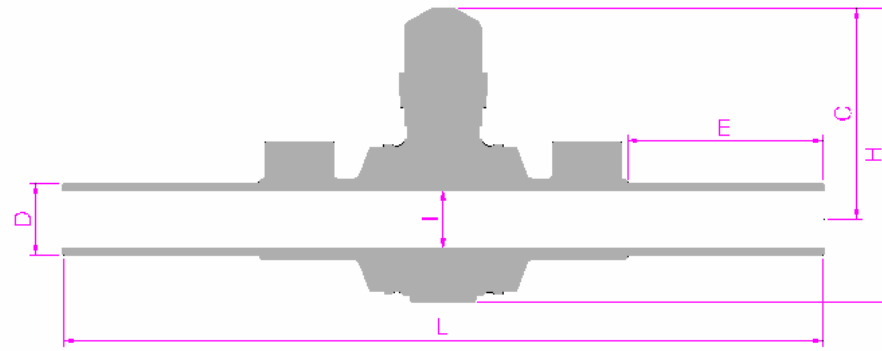
Nominal Valve Size	PE Wall SDR *	Normal OD "D"	Min Wall Thickness	L	H	C	I	Port	CV	E	Weight lbs (kg)
1/2 CTS	SDR 7	0.625 15.9	.090 2.27	11.50 292	5.12 130	3.70 94	1.06 27	Full	9	3.62 92	1.04 0.47
3/4 CTS	SDR 11.3	0.875 22.2	.077 1.95	11.50 292	5.12 130	3.70 94	1.06 27	Full	?	3.62 92	1.06 0.47
1 CTS	SDR 11.1	1.125 28.6	.101 2.56	11.50 292	5.12 130	3.70 94	1.06 27	Full	36	3.62 92	1.06 0.48
1 1/4 CTS	SDR 15.3	1.375 34.9	.090 2.27	11.50 292	5.12 130	3.70 94	1.06 27	Full	55	3.62 92	1.06 0.48

SMALL IPS SIZE PE VALVES (Standard & Full Port)

Nominal Valve Size	PE Wall SDR	Normal OD "D"	Min Wall Thickness	L	H	C	I	Port	CV	E	Weight lbs (kg)
1/2 IPS 20mm	SDR 11	0.840 21.3	.076 1.93	11.50 292	5.12 130	3.70 94	1.06 27	Full	20	3.62 92	1.04 0.47
3/4 IPS 25mm	SDR 11	1.050 26.7	.095 2.40	11.50 292	5.12 130	3.70 94	1.06 27	Full	32	3.62 92	1.06 0.48
1 IPS 32mm	SDR 11	1.315 33.4	.119 3.02	11.50 292	5.12 130	3.70 94	1.06 27	Full	50	3.62 92	1.06 0.48
1 1/4 IPS 40mm	SDR 11	1.660 42.1	.151 3.84	11.50 292	5.12 130	3.70 94	1.06 27	Std	79	3.62 92	1.08 0.49
1 1/2 IPS 50mm	SDR 11	1.900 48.3	.173 4.39	11.81 300	5.51 140	3.78 96	1.26 32	Std	104	3.15 80	1.74 0.79
2 IPS 63mm	SDR 11	2.375 60.3	.216 5.49	11.81 300	5.51 140	3.78 96	1.38 35	Std	118	3.31 84	1.90 0.86



NPC TYPE PE VALVE

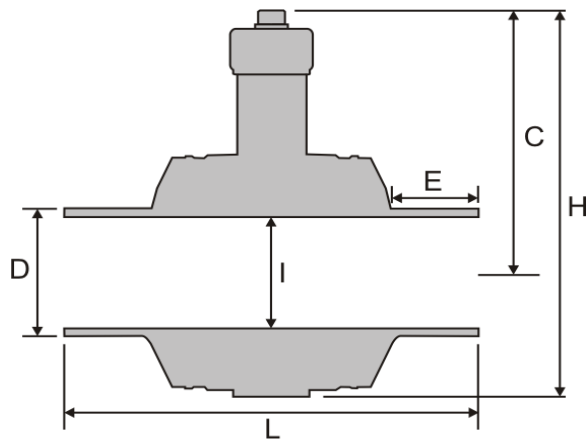


PC TYPE PE VALVE

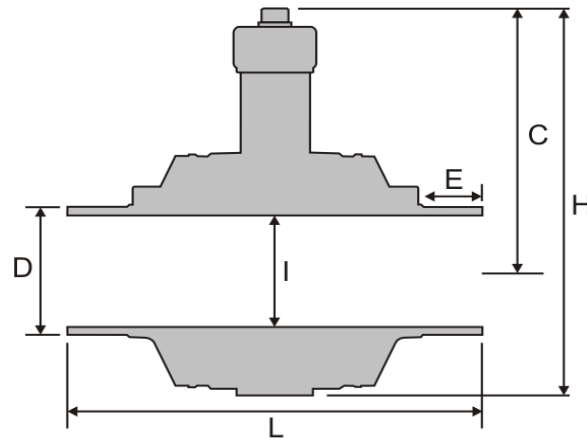
2 IPS (Full-Port) through 8 IPS PE VALVES

Nominal Valve Size	PE Wall SDR	Normal OD "D"	Min Wall Thickness	L		H	C	I	Port	CV	E		Weight lbs (kg)	
				NPC	PC						NPC	PC	NPC	PC
2 IPS 63mm	SDR 11*	2.375 60.3	.216 5.49	19.53 496	25.98 660	9.84 250	7.01 178	1.77 45	Full	164	6.69 170	6.69 170	4.63 2.1	5.73 2.6
3 IPS 90mm	SDR 11*	3.500 88.9	.318 8.08	21.18 538	25.98 660	12.01 305	8.50 216	2.52 64	Full	375	6.69 170	6.69 170	8.82 4.00	9.92 4.5
4 IPS 110mm	SDR 11*	4.500 114.3	.409 10.39	21.18 538	25.98 660	12.01 305	8.50 216	2.52 64	Std	407	6.69 170	6.69 170	10.14 4.6	11.68 5.3
4 IPS 110mm	SDR 11*	4.500 114.3	.409 10.39	24.02 610	28.74 730	15.00 381	10.39 264	3.58 91	Full	591	6.69 170	6.69 170	18.74 8.5	20.06 9.1
6 IPS 160mm	SDR 11*	6.625 168.3	.603 15.32	24.02 610	28.74 730	15.00 381	10.39 264	3.58 91	Std	854	6.69 170	6.69 170	22.49 10.2	25.57 11.6
6 IPS 160mm	SDR 11*	6.625 168.3	.603 15.32	26.18 665	31.89 810	19.09 485	13.03 331	4.80 122	Full	1280	6.69 170	6.69 170	39.90 18.10	42.33 19.2
8 IPS 225mm	SDR 11*	8.625 219.1	.785 19.94	30.12 765	33.27 845	24.80 630	16.57 421	6.69 170	Full	2146	6.69 170	5.71 145	91.71 41.60	98.33 44.6

* SDR 9.3 Available for all 2 IPS through 12 IPS Sizes



NPC TYPE PE VALVE



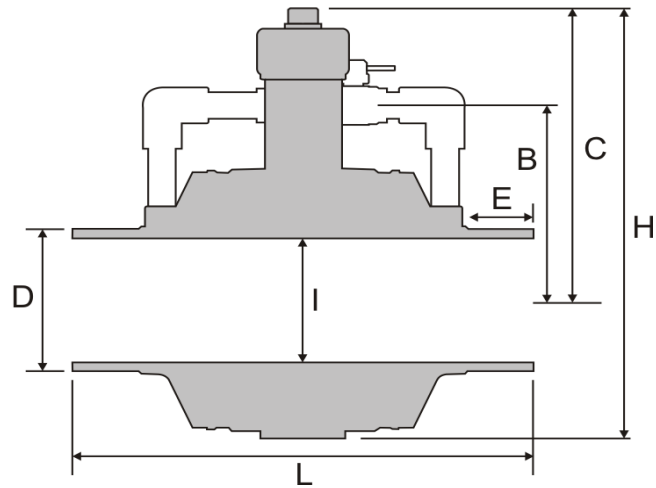
PC TYPE PE VALVE

STANDARD 10 IPS Through 12 IPS (Reduced Port) PE VALVES With Short Gear (For High Pressure Applications)

Nominal Valve Size	PE Wall SDR	Normal OD "D"	Min Wall Thickness	L		H	C	I	Port	CV	E		Weight lbs (kg)	
				NPC	PC						NPC	PC	NPC	PC
10 IPS 280mm	SDR 11*	10.750 273.0	.978 24.85	30.12	32.60	31.89 810	23.66 601	7.95 202	Full	3074	7.09	5.55	103.18	107.37
				765	828						180	141	46.80	48.7
12 IPS 315mm	SDR 11*	12.750 323.8	1.160 29.47	30.12	32.60	31.89 810	23.66 601	7.95 202	Std	3646	7.48	5.55	106.70	113.10
				765	828						190	141	48.40	51.3

High pressure models of 10 IPS and 12 IPS valves are standard with the short gear operator dimensions shown above.

For extended lengths, refer to Optional Gear Type Valves for dimensions. Call for other configurations.



STANDARD 12 IPS (Full Port) Through 16 IPS PE VALVES with Short Gear (For High Pressure Applications)

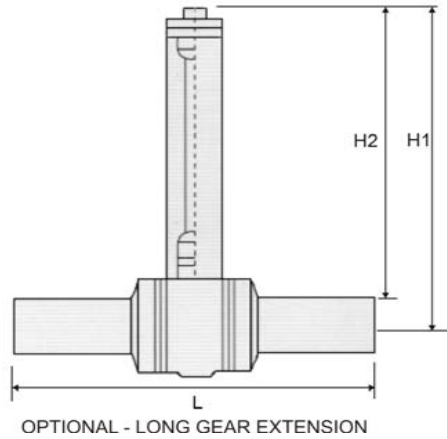
Nominal Valve Size	PE Wall SDR	Normal OD "D"	Min Wall Thickness	L	H	C	B	I	Port	CV	E	Weight lbs (kg)
12 IPS 315mm	SDR 11*	12.750 323.8	1.160 29.47	38.50 978	38.58 980	26.16 664.5	17.36 441	11.38 289	Full	4746	5.71 145	263.45 121.30
14 IPS 355mm	SDR 11*	14.000 355.6	1.273 32.4	35.83 978	38.58 980	26.16 664.5	17.56 446	11.38 289	Full	5736	5.71 145	226.09 122.50
16 IPS 400mm	SDR 11*	16.000 406.4	1.455 36.96	35.83 978	38.58 980	26.16 664.5	18.23 463	11.38 289	Full	6559	5.71 145	274.91 126.50

High pressure models of 12 IPS (Full Port) - 16 IPS valves are standard with the Short Gear Operator and Differential Bypass Assembly

Call for other configurations

OPTIONAL - LONG GEAR TYPE PE VALVES

PE PIPE SIZE	Port	H1	H2	Weight lbs (kg)
6 IPS	Full	35.75	32.64	62.61
		908	829	28.4
8 IPS	Full	39.21	34.65	118.83
		996	880	53.9
10 IPS	Full	39.21	33.27	122.36
		996	845	55.5
12 IPS	Std	32.91	32.95	125.22
		996	837	56.8
12 IPS	Full	34.06	27.76	226.54
		865	705	120.9
14 IPS	Full	34.06	26.77	273.81
		865	680	124.2
16 IPS	Full	34.06	25.59	278.88
		865	650	126.5

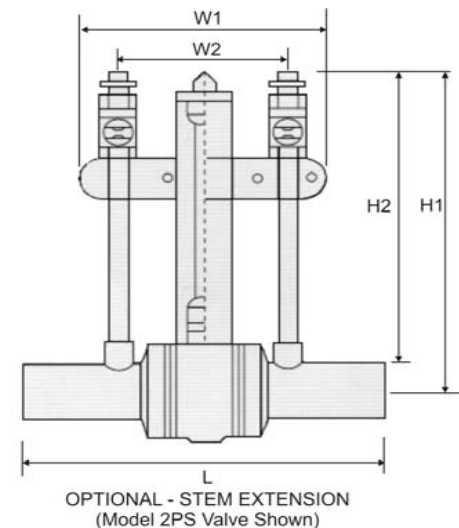


For the "L" (length), please reference the "L" dimension listed for NPC or PC type valves under the table without the gear extension.

1 or 2 Purge Ports can be added to 6 IPS - 12 IPS (Std Port). Call for dimensions

OPTIONAL - STEM EXTENSION AND PURGE TYPE PE VALVES

PE PIPE SIZE	Port	H1**	H2**	W1	W2	Weight lbs (kg)		
						NPS	1PS	2PS
2 IPS	Full	28.74	27.56	14.80	9.84	11.46	17.20	19.40
		730	700	376	250	5.2	7.8	8.8
3 IPS	Full	30.12	28.35	14.80	9.84	15.87	21.38	23.81
		765	720	376	250	7.2	9.7	10.80
4 IPS	Std	30.12	27.87	14.80	9.84	17.42	22.05	24.91
		765	708	376	250	7.9	10.0	11.3
4 IPS	Full	31.93	29.72	17.56	12.60	25.79	31.75	34.17
		811	755	446	320	11.7	14.4	15.5
5 IPS	Std	31.93	29.72	17.56	12.60	29.10	35.05	37.70
		811	741	446	320	13.2	15.9	17.1
6 IPS	Std	31.93	27.78	17.56	12.60	32.41	37.04	40.12
		811	731	446	320	14.7	16.8	18.2
6 IPS	Full	34.69	31.54	20.24	15.35	51.37	57.32	59.66
		881	801	514	390	23.3	26.0	27.06
8 IPS	Full	38.07	33.70	22.76	17.72	105.38	110.54	113.67
		967	856	578	450	47.8	50.14	51.56



For the "L" (length), please reference the "L" dimension listed for NPC or PC type valves under the table without the stem extension.

** The H1 and H2 dimensions listed above are the same for NPS, PC, and 2 PS models.