

LYCOSAVER METER BY-PASS VALVES

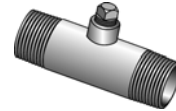
LYCOSAVER By-Pass Meter Set Assemblies

Description
LYCOSAVER By-pass Valves can be preinstalled in Lyall Meter Set Assemblies. Please refer to the Meter Set Assembly Configuration guide for standard sizes, styles, and part number information.



LYCOSAVER Steel Fitting Style

Outlet Size	Inlet Size	Part Number
1" NPT	x 1" NPT	LSVR070



LYCOSAVER
Retrofit By-pass
Steel Fitting

LYCOSAVER Swivel Style

Outlet Size	Swivel Size	Part Number
1" NPT	x Sprg#1A	LSVR070-SP1A
1" NPT	x 20LT	MN-BAB-AA
1" NPT	x 30LT	MN-BAC-AA



LYCOSAVER
Retrofit By-pass
Swivel

Lyall's Supplemental By-pass Supply Kits

A) By-Pass Hose Assembly

Pressure Rating	Part Number
7" Water Column	LSVRHOSE01-IWC
2 PSI	LSVRHOSE01-PSI



By-pass Hose
Assembly

B) By-Pass Valve Adapter (Connects Hose to Bypass Valve)

Bypass Valve Size	Part Number
3/4" NPT	LSVRADAPTER-060
1" NPT	LSVRADAPTER-070



By-pass Valve
Adapter

C) By-Pass High Pressure Connector (Connector for Hose to Riser Bypass)

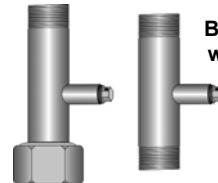
Description	Part Number
Fits all Lyall Bypass (Riser) with 1/8" Port	BPC-ADAPTER -QC



High Pressure
Connector

D) Riser Bypass Adapter with Check Valve

Inlet Size	Outlet Size	Part Number
1/2" NPT	x 1/2" NPT	LRBP-050
3/4" NPT	x 3/4" NPT	LRBP-060
1" FPT	x 1" NPT	LRBP-070
1-1/4" FPT	x 1" NPT	LRBP-080



By-pass Adapters
with Check Valve

LYALL CUSTOMER SERVICE: (800) 535-9255 • Web site: www.rwlyall.com

The products listed on this page only represent the most commonly used sizes and configurations. Please contact your local Lyall representative or a Lyall Customer Service representative for additional sizes, customized configurations and available options.