

LYCOFIT[®]

MECHANICAL FITTINGS

- 100% Leak-Proof, Easy to Install
- Cost Effective, Maintenance Free Joining System
- Unprecedented Performance Levels and Proven Reliability
- Excellent Durability Resistant to Harsh Chemicals and Cracking
- Simple Installation No Fusion Equipment Required
- No Measuring or Calculating Required
- Absolutely No Slippage or Pull-out



The Fastest, most Assured, and Cost-Effective solution for field assembly of Natural Gas and Propane Gas polyethylene (PE) pipe distribution systems.



THE LYALL COMPANY

When it comes to getting the job done right and questions come up, we know you need the right solution—right now. At Lyall we're committed to providing



proven products, innovative designs, and access to people who know how the job is done, understand problems that can arise, and are

prepared to provide you the answers you need to get the job done right. It is this commitment, extended over several decades that has propelled Lyall to the top of the gas piping systems industry. Lyall—when you're looking for a partner you can count on.

EASY TO INSTALL, RELIABLE, AND COST EFFICIENT

At Lyall we apply our 30 years of experience to the development and manufacture of quality products that make for safe, fast and efficient installations, thus, saving you time and lowering the cost of installation. Lyall's innovative designs create products that perform better and last longer. This combined with the most durable materials in the industry, help to eliminate leaks and connections failures, while providing immediate quality checks. Lyall—products you can rely on.

LYCOFIT FITTINGS

Application

LYCOFIT® is a mechanical fitting for connecting underground Polyethylene (PE) gas piping systems. Lyall offers over 900 configurations allowing for varied installation requirements.

Innovative Design, Engineered Performance

Stronger than the pipe to which they are connected, LYCOFIT® fittings are engineered to be superior in almost every way, and provide an economical solution for below ground, polyethylene (PE) gas pipe connections.

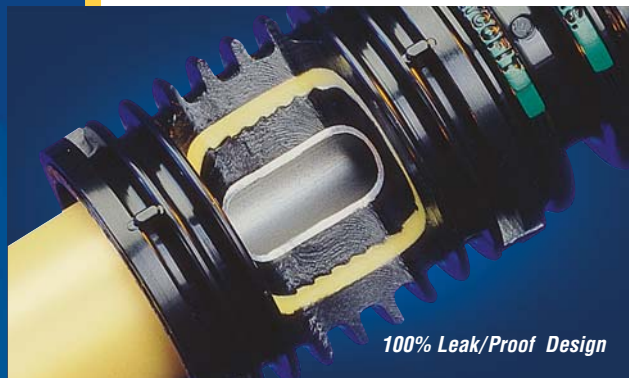
Made From the Most Durable Materials

LYCOFIT® fittings are molded from Rilsan®11 which provides excellent resistance to a broad range of chemicals including: Oils, Gasoline, Hydraulic Fluids, Organic/inorganic acids, salts and alkalis based substances, as well as being unaffected by corrosion, methane permeation and other harsh industrial environments. In addition to being chemical resistant, LycoFit® fittings are extraordinarily resistant to impact, abrasion, temperature conditions from well below freezing to 140°F. LYCOFIT®—made to withstand almost any condition.



Patented 100% Leak-Proof Design

The LYCOFIT® fitting takes advantage of the natural sealing properties of the PE pipe, in a superior patented design that uses a barbed spigot to seal the inside diameter (ID) of the PE gas pipe, and a completion sleeve that provides the force necessary for a leak-proof, reliable connection every time. By using the polyethylene as the gasket material, this assures a positive seal between the coupling and the pipe regardless of the outside condition of the pipe. The system eliminates the use of



O-rings and rubber gaskets that could leak on scratched pipe or deteriorate under adverse conditions like exposure to chemicals. Compact LYCOFIT® designs allow for installation in confined spaces.

Eliminates Pull-Out

The design provides a connection so strong that it provided enough gripping power to eliminate pull-out 100% of the time. In ASTM Quick Burst and Tensile Testing, PE pipe fails before the LYCOFIT® coupling every time!

Instant Visual Check

LYCOFIT® provides the installer with a full visual quality check—first “pipe on” and the “sleeve on” in each installation for a gas tight connection.

Sizes Available

Lyall offers a full line of standard sizes and configurations in both SAE and metric. For a complete listing please refer to the LYCOFIT® Technical Data Sheet or call (800) 535-9255 and a representative will assist you. Visit www.rwlyall.com for the newest product developments.



End Cap



PE to Copper Tubing Adapter



Reducer, 3-way Tee



PE to Steel Transistor



Stop & Go Coupling



90° Elbow



3-way Tee



Reducer Coupling



Repair Coupling



Mechanical Tapping Tees

The LYCOFIT® bolt-on Mechanical Tapping Tee is an excellent cost efficient, leak-proof solution for main to service line connections. Available for 1-1/4" IPS to 6" IPS main sizes with outlet sizes of 1/2" CTS to 1-1/4" CTS and 1/2 IPS to 1" IPS. Metric sizes available. For additional information please refer to the LYCOFIT® Mechanical Tapping Tee Data Sheet.

LYCOFIT®

MECHANICAL FITTINGS

LYALL TOOLS

Tools That Make Every Job Quick and Easy

Time is money. And to make sure you do each operation quickly, easily, and properly every time Lyall offers the right tools to assure the job is done correctly.

Quick Ratchet Press (QRP-100)

The QRP-100 is a light weight, durable, single ratchet field assembly tool that installs all LYCOFIT® couplings from 1/2" CTS through 1" IPS.

Dual Quick Ratchet Press (QRP-200)

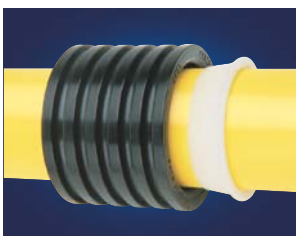
Designed for manual installations, the dual ratchet design of the QRP-200 makes it simple to install of medium to large sized piping systems. Installs all LYCOFIT® couplings from 1/2" CTS through 2" IPS.

Large Auto Press (LAP-100)

This heavy duty hydraulic tool is designed to provide thousands of worry free installations quickly and easily. Installs 1-1/4", 1-1/2" and 2" IPS LYCOFIT® couplings.

LycoRing®

Lightweight, disposable plastic ring that easily slips over the PE pipe and securely grips the pipe while inserting the pipe onto the LYCOFIT® spigot. LycoRing® is included with the matching LYCOFIT® fitting and can be used with all LYCOFIT® configurations that use QRP or LAP tools, including tapping tee outlets. LycoRing® is provided with each LYCOFIT® fitting and eliminates the need for additional gripping tools to install fittings.



Complete installation instructions available at www.rwlyall.com



Quick Ratchet Press (QRP-100)



Dual Ratchet Press (QRP-200)



Large Auto Press (LAP-100)



LycoRing

OTHER FINE LYALL PRODUCTS

- LYCOFIT® Mechanical Tapping Tees
- Lyall Transition Fittings
- Lyall Anodless Risers
- Lyall Transition Risers
- Lyall Excess Flow Valves
- Lyall Meter Set Assemblies
- Lyall Commercial Meter Sets
- Lyall Industrial Meter Sets and Spools

SPECIFICATIONS

- Meets or exceeds all requirements for the Categorization of Mechanical Fittings within ASTM D2513-90c Category 1, and requirements from the Code of Federal Regulations, Title 49 Part 192.281 and 192.283.
- Meets or exceeds NFPA-58 - 1992, DOT and ISO requirements.

- Listed with IAPMO/UPC and CSA
- Conforms to the Mechanical Fitting Specification as defined in ASTM F 1924.

A complete set of specifications and test results for this product are available upon request.

YOUR COMPLETE GAS PIPING SOURCE



RILAN® is a registered trademark of ATOFINA INC. RWL logo, Lyall logo, LYCO, LYCOFIT, and LYCOSAVER are registered trademarks of R. W. Lyall & Company, Inc. US Patent Registered*
RWL# LIT-LCDS-2C 1022382/5M/0607 *Patent registered in the United States and many other countries. © 2002 R. W. Lyall & Company, Inc.



R. W. Lyall & Co., Inc.
2665 Research Drive
Corona, CA 92882-6918
(800) 535-9255
(951) 270-1600 Fax
www.rwlyall.com