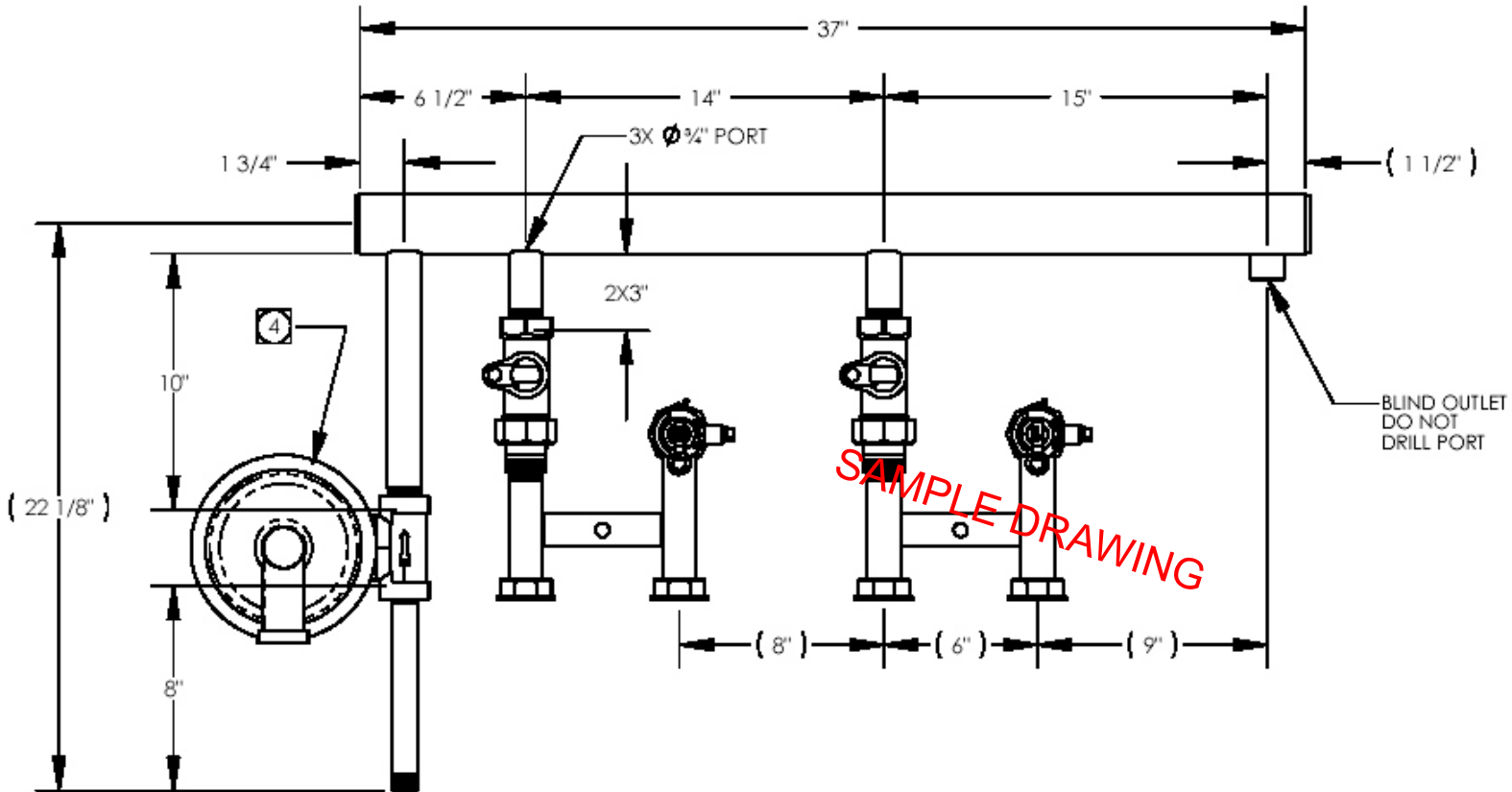


REVISIONS				
REV	ECN	DESCRIPTION	DATE	REV. BY



VALVE NOTES:
 ORIENTATION: AS SHOWN
 STEM POSITION: AS RECEIVED
 COATING: GRAY PAINT PER RWL ES0804-07

1. ASSEMBLE ALL THREADED COMPONENTS AND TORQUE PER RWL SPECIFICATION ES 0905.
2. PRESSURE TEST ASSEMBLY FOR A MINIMUM OF 15 SECONDS AT 100 PSIG.
3. DIMENSIONS IN PARENTHESES ARE FOR REFERENCE ONLY.

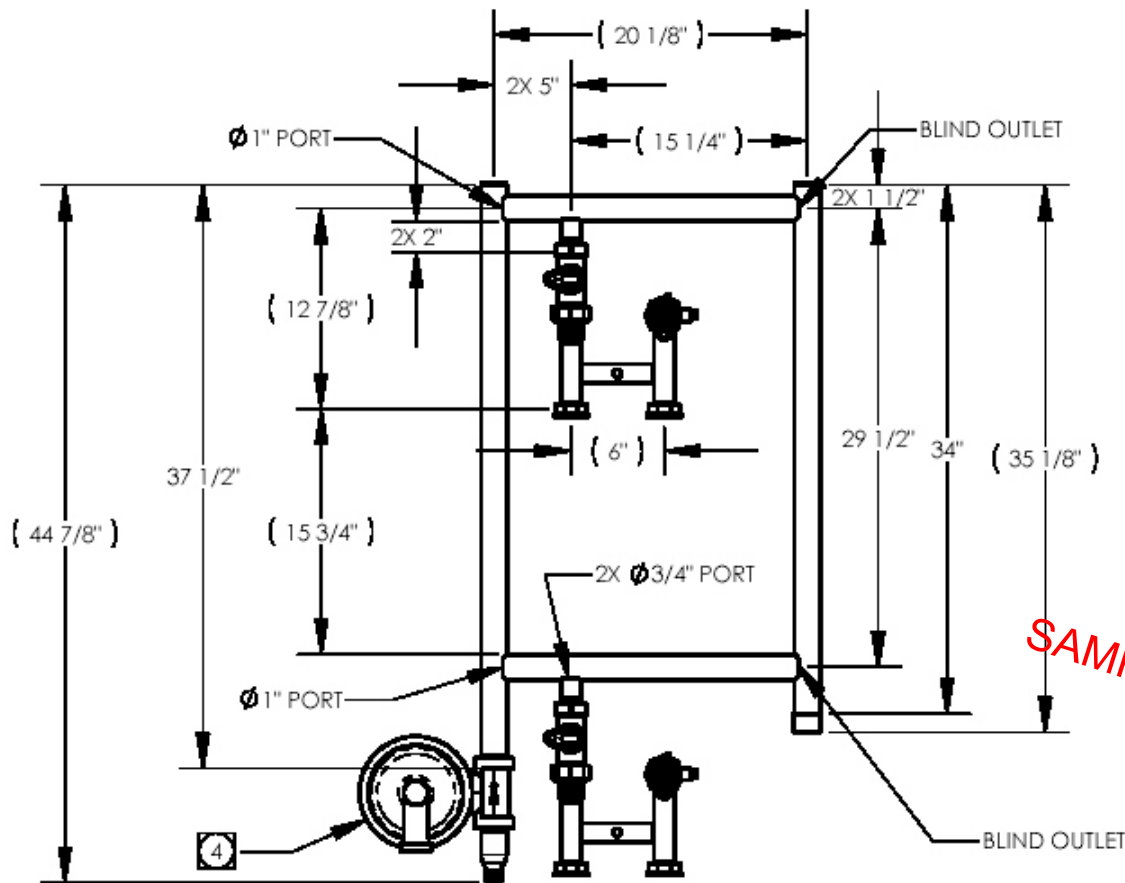
4 APPROVED REGULATORS:

NOTES: UNLESS OTHERWISE SPECIFIED.

Meter Manifold featuring LYCO® A-9 Meter Outlet Valves with Bypass.

UNLESS OTHERWISE SPECIFIED DIMENSIONS ARE IN INCHES TOLERANCES ON:		DR BY	JOSE DIAZ	DATE	12/22/00	R.W. LYALL & COMPANY, INC. 2665 Research Dr Ph: [909] 270-1500 Corona, Ca. U.S.A. Fax: [909] 270-1600	
DECIMALS	ANGLES	ALL OTHERS	CHK BY	C. RAVEN	DATE		5/21/04
.XX= ±.01	± 2°	± 1/8"	APPVD	D. ZAPALAC	DATE		5/21/04
.XXX= ±.005			DOCUMENT RELEASE NUMBER		ECN 2846	METER MANIFOLD ASSEMBLY NPS 2 HEADER X (2) NPS 1 OUTLETS NPS 3/4 INLET X 20LT	
DO NOT SCALE PRINT			MATERIAL:				SIZE A DRAWING NO. SAMPLE DRAWING REV G
SEE BILL OF MANUFACTURE			FINISH:			SCALE: 1:7 CAD FILE: MMA-CASCN-01.SLDDRW SHEET 1 OF 1	
POLYESTER COATING PER RWL SPEC ES0802			Proprietary rights are included in the information disclosed herein. Neither this document nor any information disclosed shall be reproduced, used, transferred to other documents, or disclosed to others for any purpose, including manufacturing unless specifically authorized in writing by R.W.Lyall & Company, Inc. Also all rights for manufacturing and/or sale remain the property of R.W.Lyall & Company, Inc.				

REVISIONS				
REV	ECN	DESCRIPTION	DATE	REV. BY



SAMPLE DRAWING

Meter Manifold featuring LYCO® A-9 Meter Outlet Valves with Bypass.

1. VALVE INFORMATION:
VALVE ORIENTATION: AS SHOWN
STEM POSITION: AS RECEIVED
COATING: GRAY PAINT PER RWL ES0804-07
2. ASSEMBLE ALL THREADED COMPONENTS
AND TORQUE PER RWL SPECIFICATION ES 0905.
3. LEAK TEST FINAL ASSEMBLY AT 100 PSIG FOR A MINIMUM OF 15 SECONDS.

4 APPROVED REGULATOR:

NOTES: UNLESS OTHERWISE SPECIFIED.

UNLESS OTHERWISE SPECIFIED DIMENSIONS ARE IN INCHES TOLERANCES ON:		DR BY JOSE DIAZ	DATE 1/22/02	R.W. LYALL & COMPANY, INC. 2665 Research Dr Corona, Ca, U.S.A. Ph: (909) 270-1500 Fax: (909) 270-1600		
DECIMALS .XXX ± .010	ANGLES ± 2°	ALL OTHERS ± 1/8"	CHK BY C. RAVEN		DATE 5/21/04	
.XXX ± .005			APPVD D. ZAPALAC		DATE 5/21/04	
DO NOT SCALE PRINT		DOCUMENT RELEASE NUMBER ECN 3073		METER MANIFOLD ASSEMBLY NPS 1 1/4 DOUBLE DECKER NPS 3/4 INLET X NPS 1 (2) OUTLETS		
MATERIAL: SEE BILL OF MANUFACTURE		Proprietary rights are included in the information disclosed herein. Neither this document nor any information disclosed shall be reproduced, used, transferred to other documents, or disclosed to others for any purpose, including manufacturing unless specifically authorized in writing by R.W. Lyall & Company, Inc. Also all rights for manufacturing and/or sale remain the property of R.W. Lyall & Company, Inc.		SIZE A	DRAWING NO. SAMPLE DRAWING	REV F
FINISH: POLYESTER COATING PER RWL ES0802		SCALE: 1:1		CAD FILE: MMA-CASCN-12.SLDDRW	SHEET 1 OF 1	